



WHITESTONE
solar farm

WHITESTONE SOLAR FARM

Volume 6: Environmental Statement

6.20 Appendix 4.2: Design Evolution

Application Document ref: EN0110020/APP/6.20

Revision 01

June 2026

Planning Act (2008)
Infrastructure Planning (Applications:
Prescribed Forms and Procedure)
Regulations 2009
Regulations 5(2)(a)

whitstonesolarfarm.co.uk

ENVIRONMENTAL STATEMENT

Document Status					
Version	Purpose of Document	Authored by	Reviewed by	Approved by	Review Date
Rev01	DCO Submission	ERM	TLT, Pershing, DWD, Whitestone Net Zero Ltd	Whitestone Net Zero Ltd	01/06/2026

Approval for Issue		
Whitestone Net Zero Ltd		1 June 2026

The following report and supporting infographics have been produced by human authors. Artificial Intelligence (AI) has not been used to create or alter the technical meaning of these materials. ERM is technology-enabled and may use technology including AI in service delivery, in compliance with all laws applicable to it. Where AI has been used as an administrative support function, this has been appropriately validated by human authors.

ERM take full ownership and responsibility for the report, notwithstanding that ancillary technology (including AI tools) may have been used in service provision.

Prepared by:

ERM

Prepared for:

Whitestone Net Zero Ltd

Contents

4.2 Design Evolution2

Glossary

Term	Meaning
<i>Cable Corridors</i>	Corridors within which the connecting cables would be constructed.
<i>Non-statutory Consultation</i>	The first round of consultation held from 18 November 2024 to 31 January 2025.
<i>Stage 1</i>	First design which was held prior to public launch and the first round of public consultation.
<i>Stage 2</i>	The second design relating to updates made in March 2025 following feedback from the first round of public consultation.
<i>Stage 3</i>	The third stage of design which was presented in the Draft ES to inform the statutory consultation.
<i>Statutory Consultation</i>	The second round of public consultation held from 16 September to 28 October 2025.
<i>The Applicant</i>	Whitestone Net Zero Ltd.
<i>The Application</i>	The Application submitted to the Secretary of State for a Development Consent Order.
<i>The Proposed Development</i>	The proposed Whitestone Solar Farm.

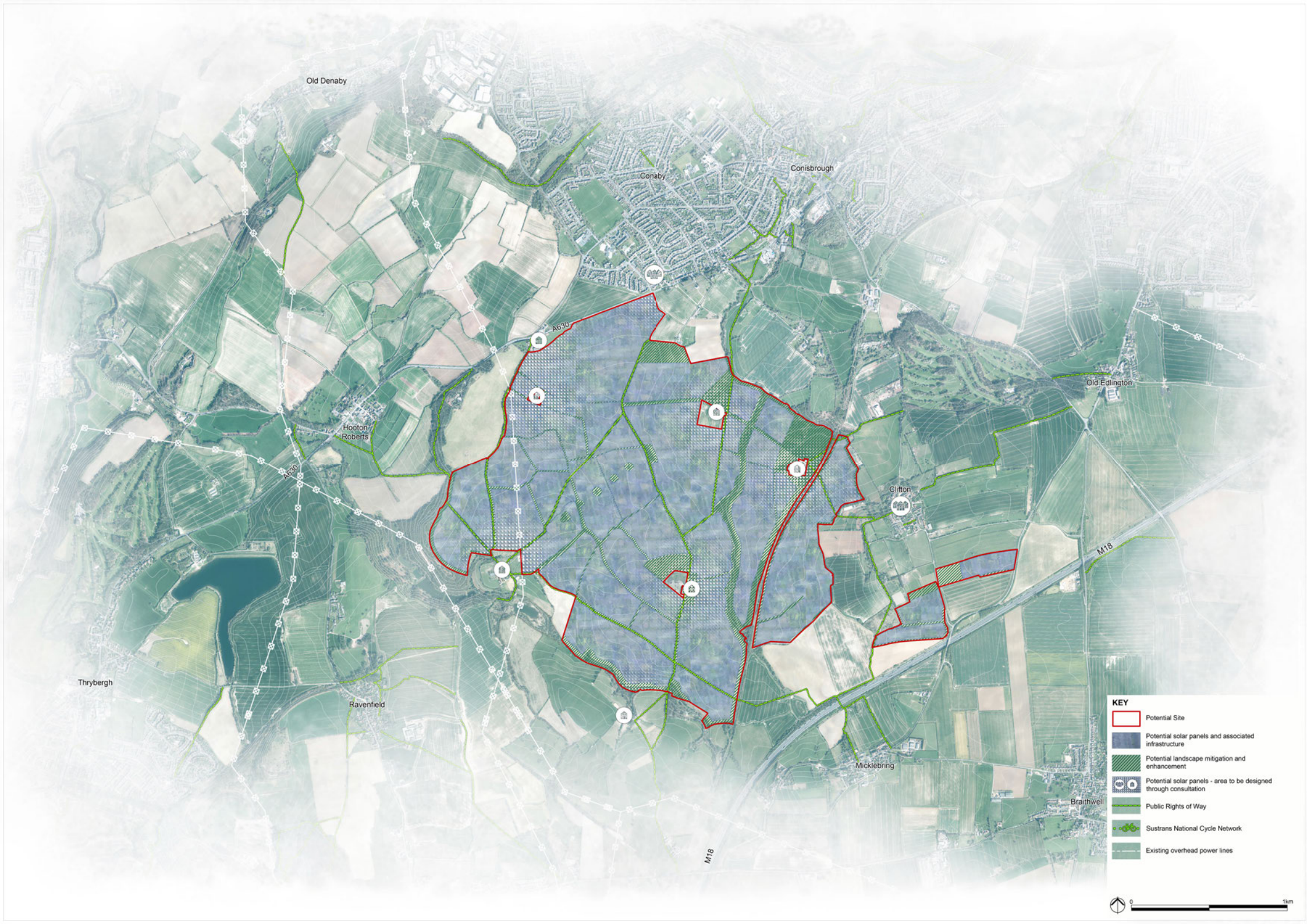
4.2 Design Evolution





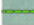
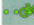

Design Stages

- 4.2.1 This Appendix presents the previous design iterations for Whitestone Solar Farm (the Proposed Development). The designs presented below are:
- Stage 1 design (September 2024)
 - Stage 2 design (March 2025); and
 - Stage 3 Design (August 2025).
- 4.2.2 The current design (Stage 4 – May 2026) is presented in **ES Volume 3, Figure 5.1: Illustrative Masterplan [EN0110020/APP/6.19]**.

Stage 1 Design

- 4.2.3 Stage 1 design is presented in the illustrative masterplan which was presented to stakeholders and local communities during the first round of consultation (Non-Statutory Consultation) which occurred from 18 November 2024 to 31 January 2025. The cable corridors identified at this stage of design were also presented at Non-Statutory Consultation. The Stage 1 illustrative masterplan and indicative cable routes identified at Stage 1 are shown in the following four pages.



KEY	
	Potential Site
	Potential solar panels and associated infrastructure
	Potential landscape mitigation and enhancement
	Potential solar panels - area to be designed through consultation
	Public Rights of Way
	Sustrans National Cycle Network
	Existing overhead power lines





- KEY**
- Potential Site
 - Potential solar panels and associated infrastructure
 - Potential landscape mitigation and enhancement
 - Potential solar panels - area to be designed through consultation
 - Public Rights of Way
 - Sustrans National Cycle Network
 - Existing overhead power lines

Brinsworth

Wharfedale

Upper Whiston

Thurston

Brockhouse

Slade Hooton

Marston-in-the-Moors

Wharfedale

Swallowwell

Harrogate

North Anston

Dinnington

Swallowwell

South Anston

North Anston

Todwick

South Anston

A630

M1

A57

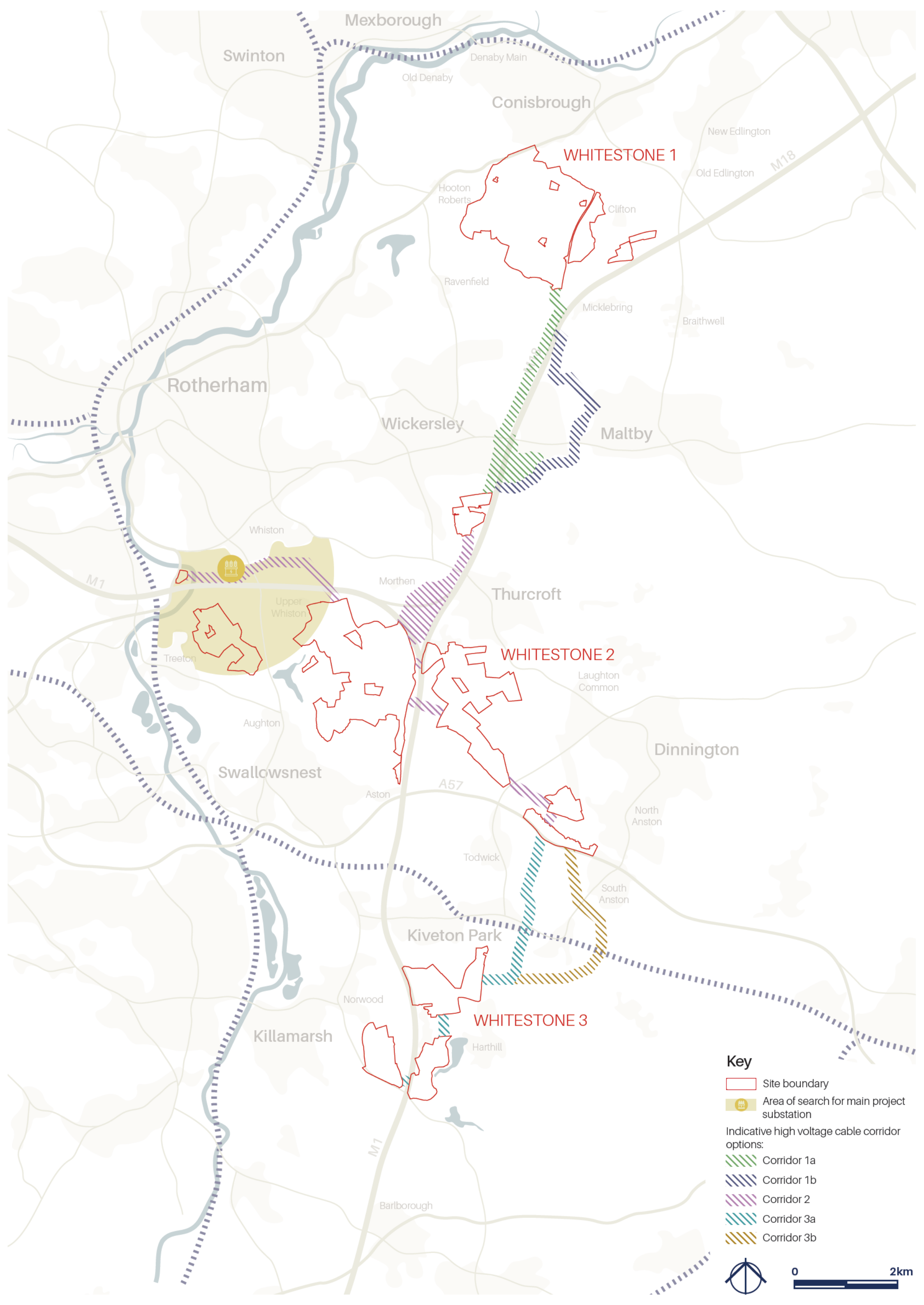
A57

A57



- KEY**
- Potential Site
 - Potential solar panels and associated infrastructure
 - Potential landscape mitigation and enhancement
 - Potential solar panels - area to be designed through consultation
 - Public Rights of Way
 - Sustrans National Cycle Network
 - Existing overhead power lines





Key

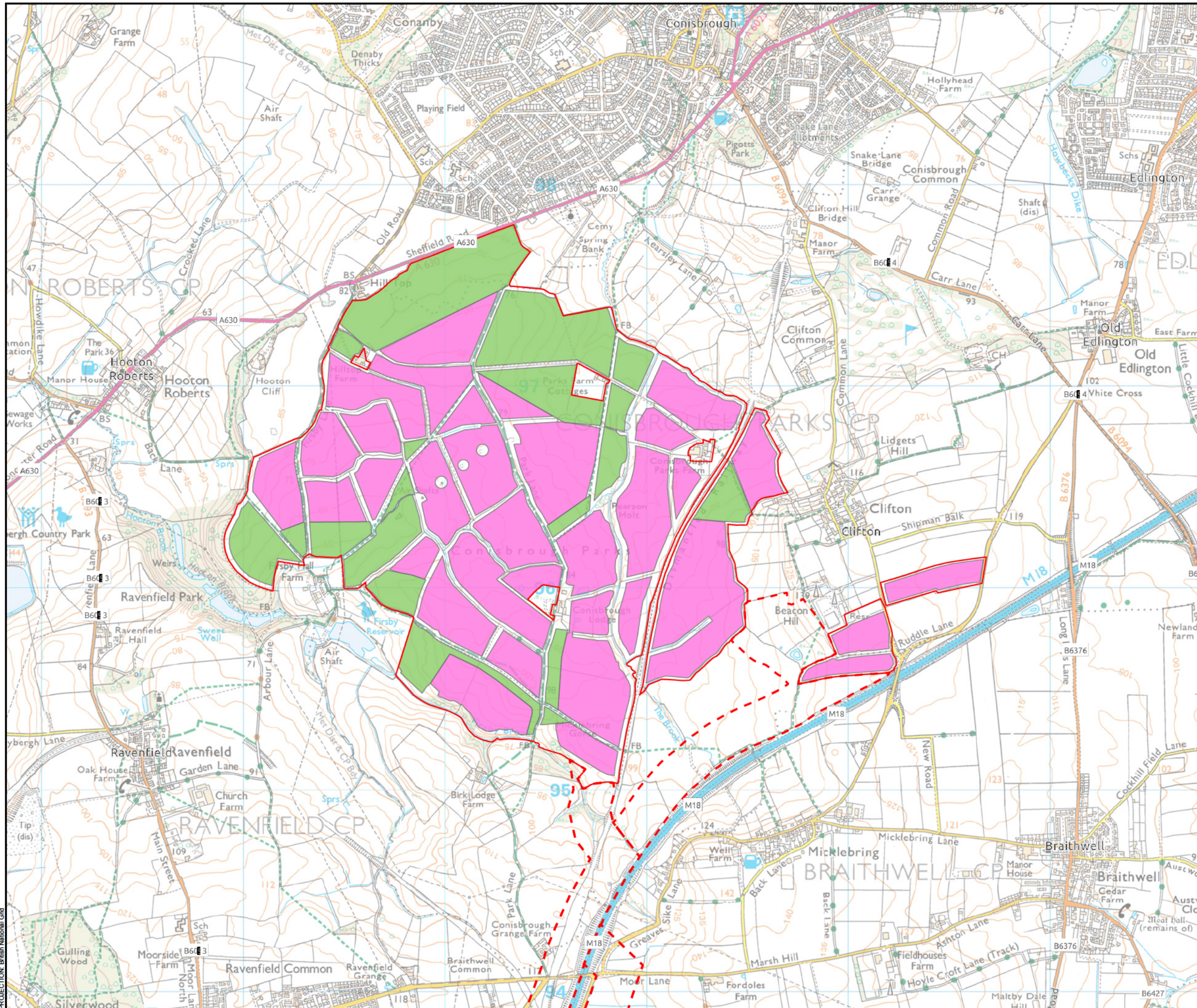
- Site boundary
- Area of search for main project substation
- Indicative high voltage cable corridor options:
 - Corridor 1a
 - Corridor 1b
 - Corridor 2
 - Corridor 3a
 - Corridor 3b

0 2km

Stage 2 Design

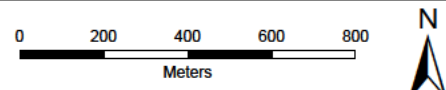
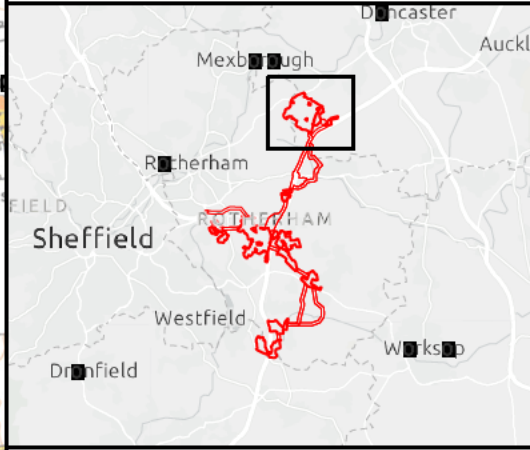
- 4.2.4 Stage 2 design is presented in the indicative developable areas figures which were submitted as part of the EIA Scoping Report (**ES Volume 3, Appendix 2.1, EIA Scoping Report [EN0110020/APP/6.20]**) submitted to the Planning Inspectorate on 23 April 2025. The cable corridors identified at this stage of design were also presented in the EIA Scoping Report, and have been included here in the Site Referencing figure. The indicative developable areas and referencing figures showing the Stage 2 design are presented in the following four pages¹.

¹ Note: These figures have been extracted from the EIA Scoping Report so numbering does not accord with this Environmental Statement.



- Site Boundary
- Cable Corridor Options
- Indicative Developable Areas
- Indicative Mitigation and Enhancement Areas

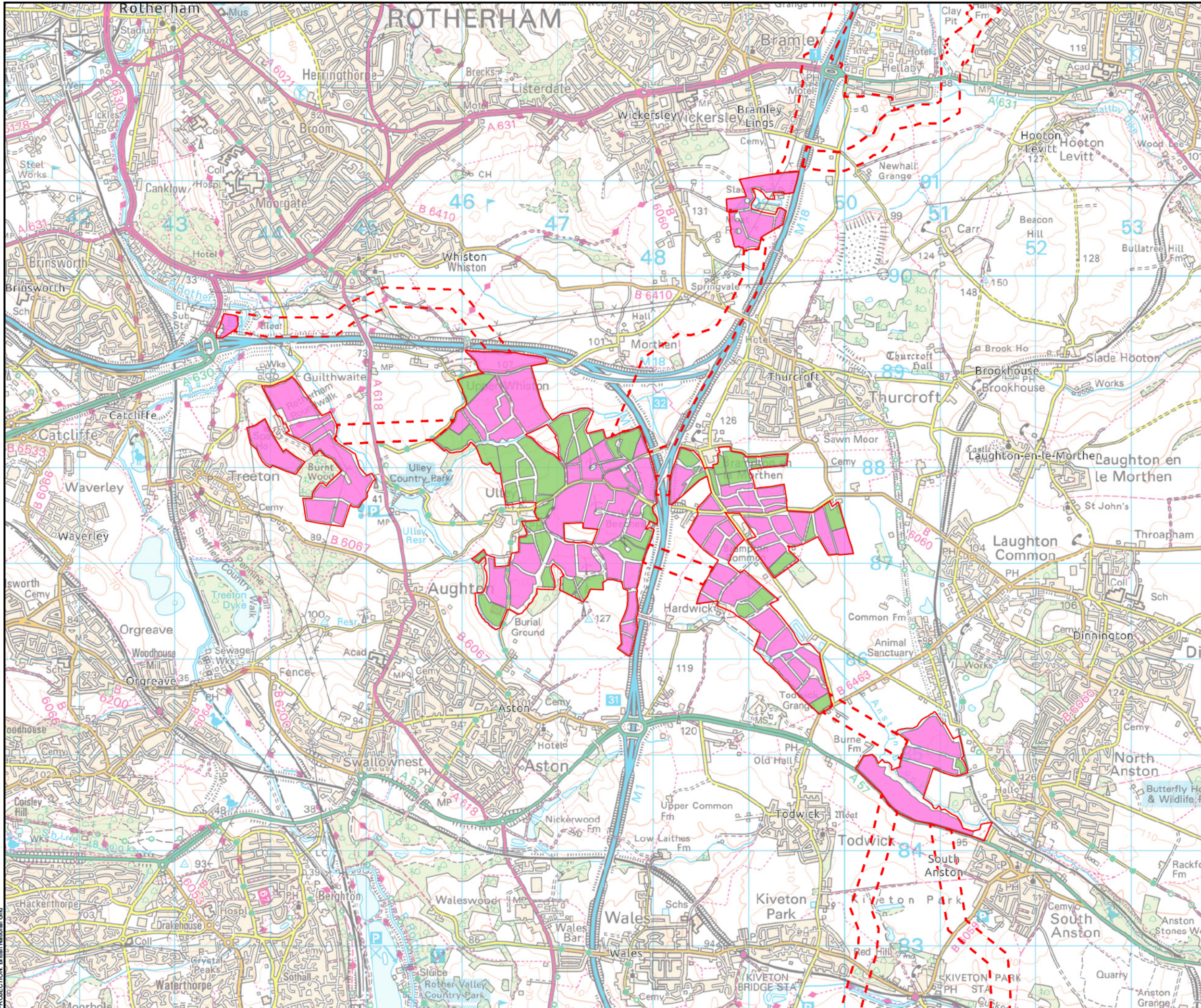
Disclaimer: The Proposed DCO Limits are indicative and subject to revision and change



SCALE: See Scale Bar SIZE: A3 PROJECT: 0720724 DATE: 22/04/2025	VERSION: A01 DRAWN: RW CHECKED: HT APPROVED: SK
--	--

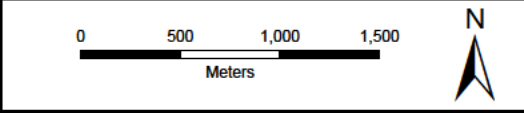
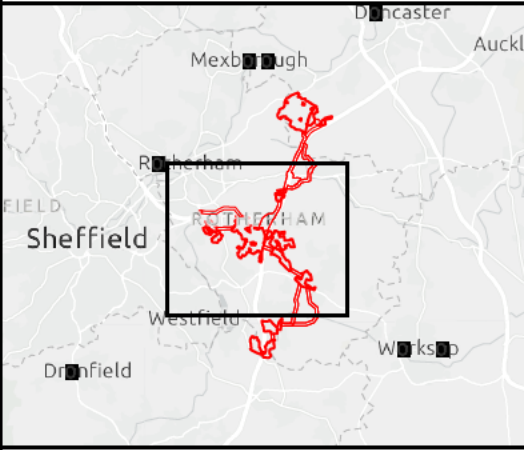
Figure 5.1
Indicative Developable Areas: Whitestone 1
Scoping Report
Whitestone Solar Farm





- Site Boundary
- Cable Corridor Options
- Indicative Developable Areas
- Indicative Mitigation and Enhancement Areas

Disclaimer: The Proposed DCO Limits are indicative and subject to revision and change

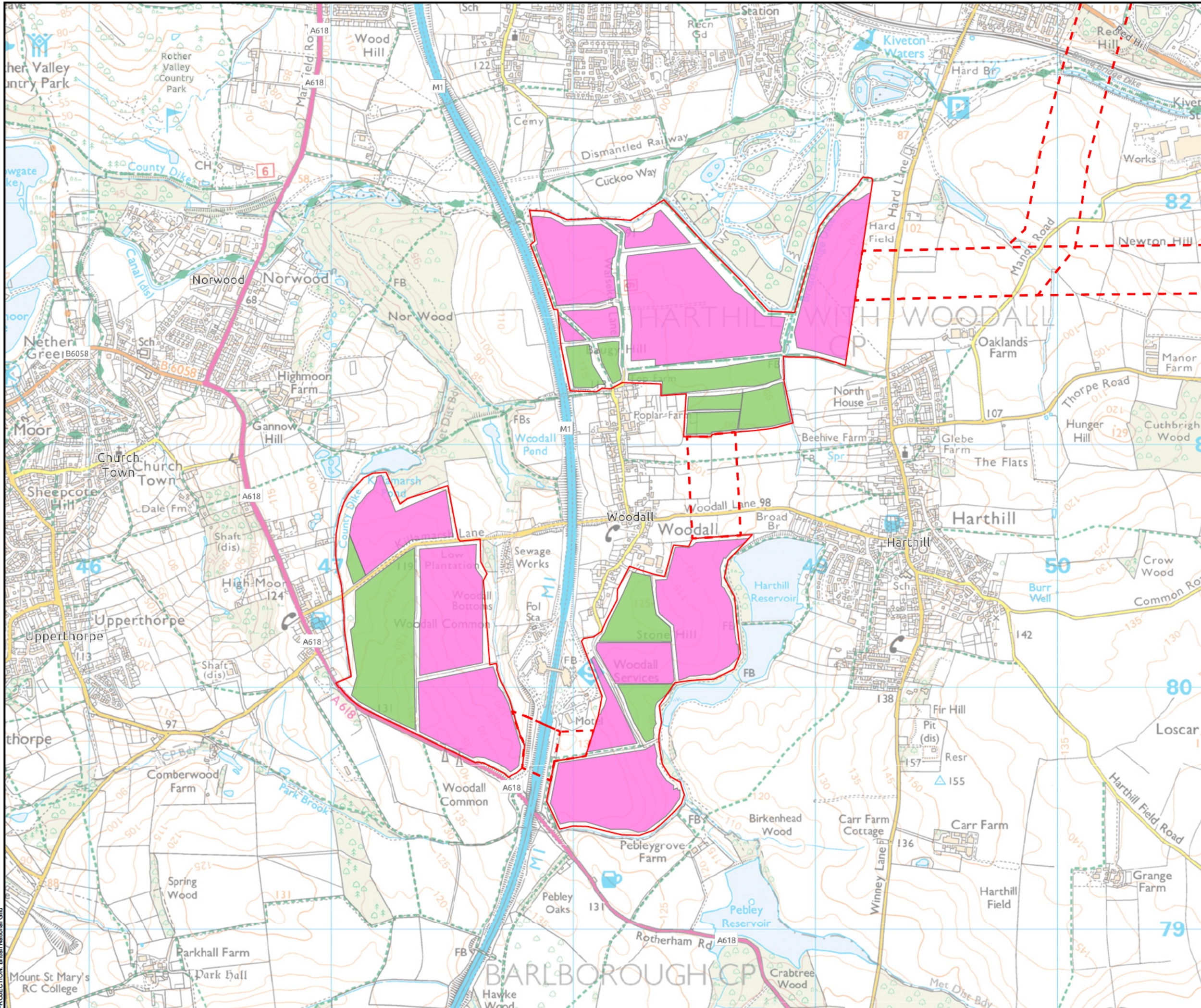


SCALE: See Scale Bar	VERSION: A01
SIZE: A3	DRAWN: RW
PROJECT: 0720724	CHECKED: HT
DATE: 22/04/2025	APPROVED: SK

Figure 5.2
Indicative Developable Areas: Whitestone 2
Scoping Report
Whitestone Solar Farm

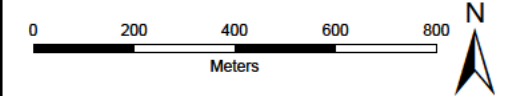
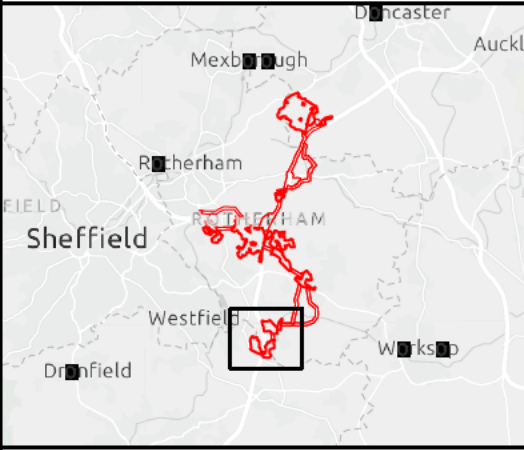
ERM

WHITESTONE
solar farm



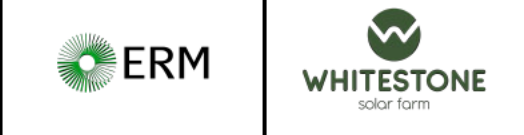
- Site Boundary
- Cable Corridor Options
- Indicative Developable Areas
- Indicative Mitigation and Enhancement Areas

Disclaimer: The Proposed DCO Limits are indicative and subject to revision and change

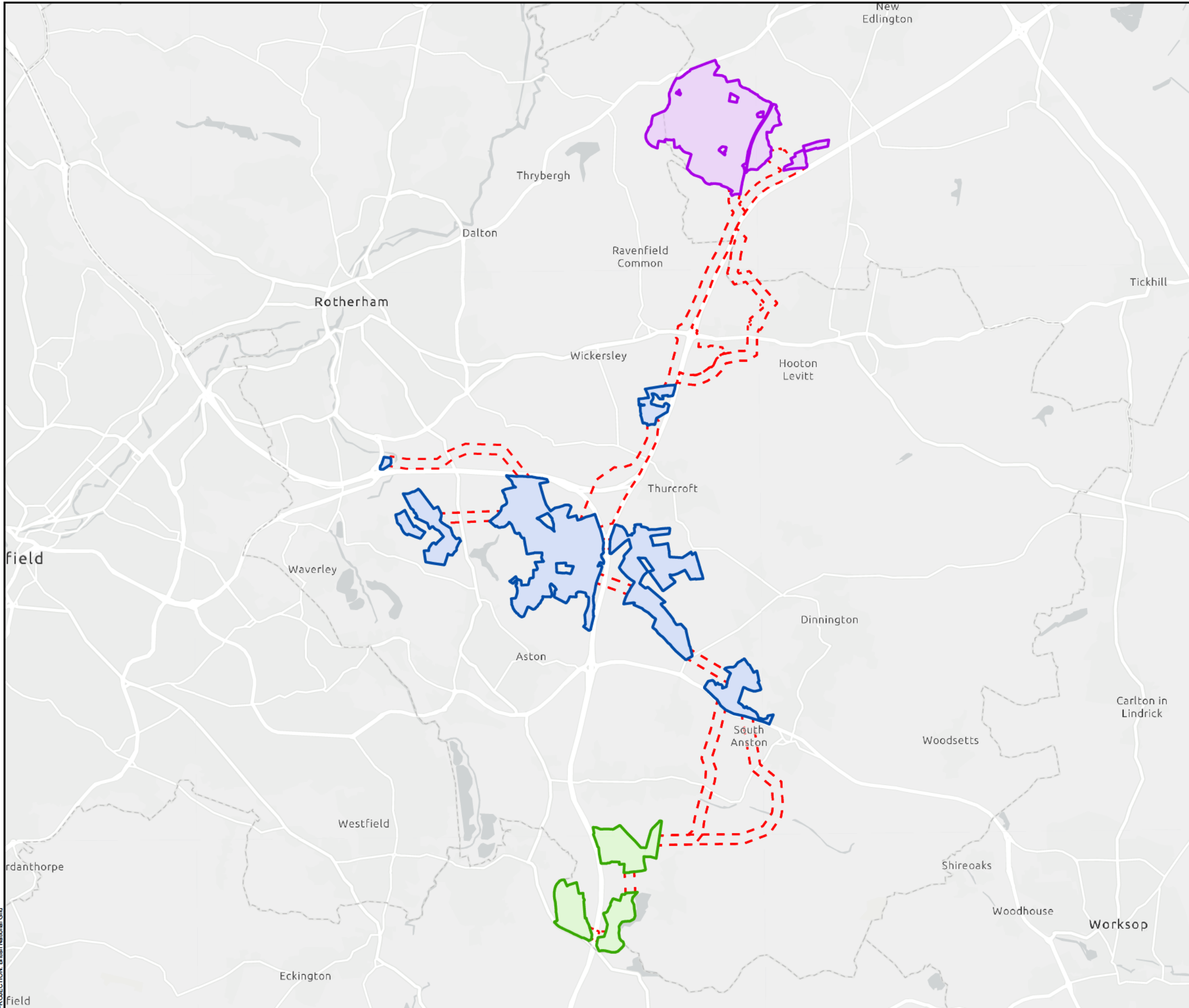


SCALE: See Scale Bar	VERSION: A01
SIZE: A3	DRAWN: RW
PROJECT: 0720724	CHECKED: HT
DATE: 22/04/2025	APPROVED: SK

Figure 5.3
Indicative Developable Areas: Whitestone 3
Scoping Report
Whitestone Solar Farm

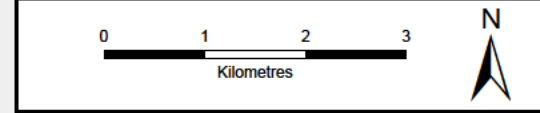


PROJECTION: British National Grid



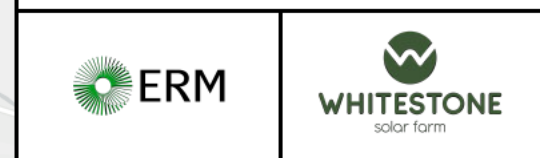
- DCO Limits
- Site Boundary - Whitestone 1
 - Site Boundary - Whitestone 2
 - Site Boundary - Whitestone 3
 - Cable Corridor Options

Disclaimer: The Proposed DCO Limits are indicative and subject to revision and change



SCALE: See Scale Bar	VERSION: A01
SIZE: A3	DRAWN: RW
PROJECT: 0720724	CHECKED: HT
DATE: 22/04/2025	APPROVED: SK

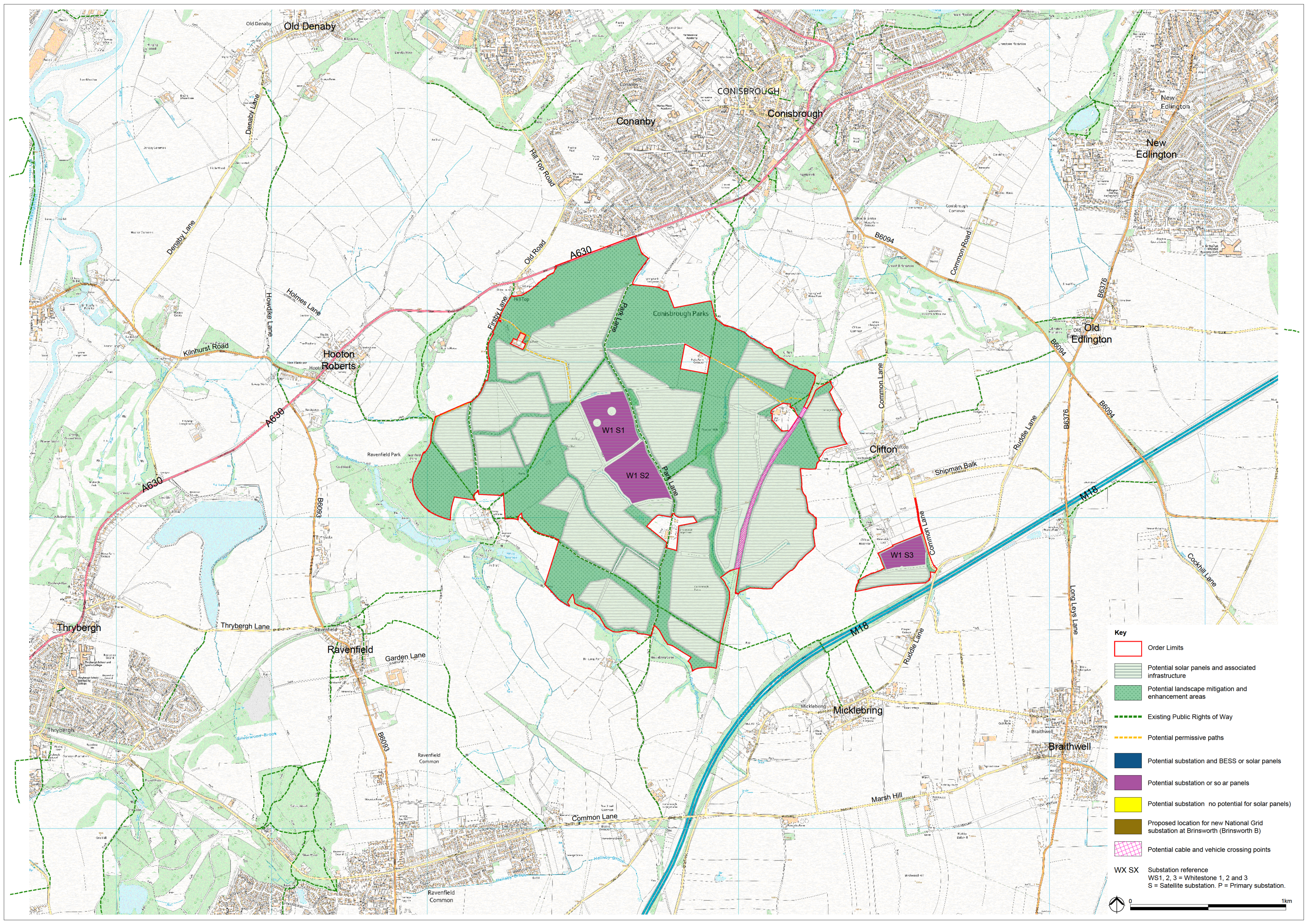
Figure 3.1
Site Referencing: Overview
Scoping Report
Whitestone Solar Farm



PROJECTION: British National Grid

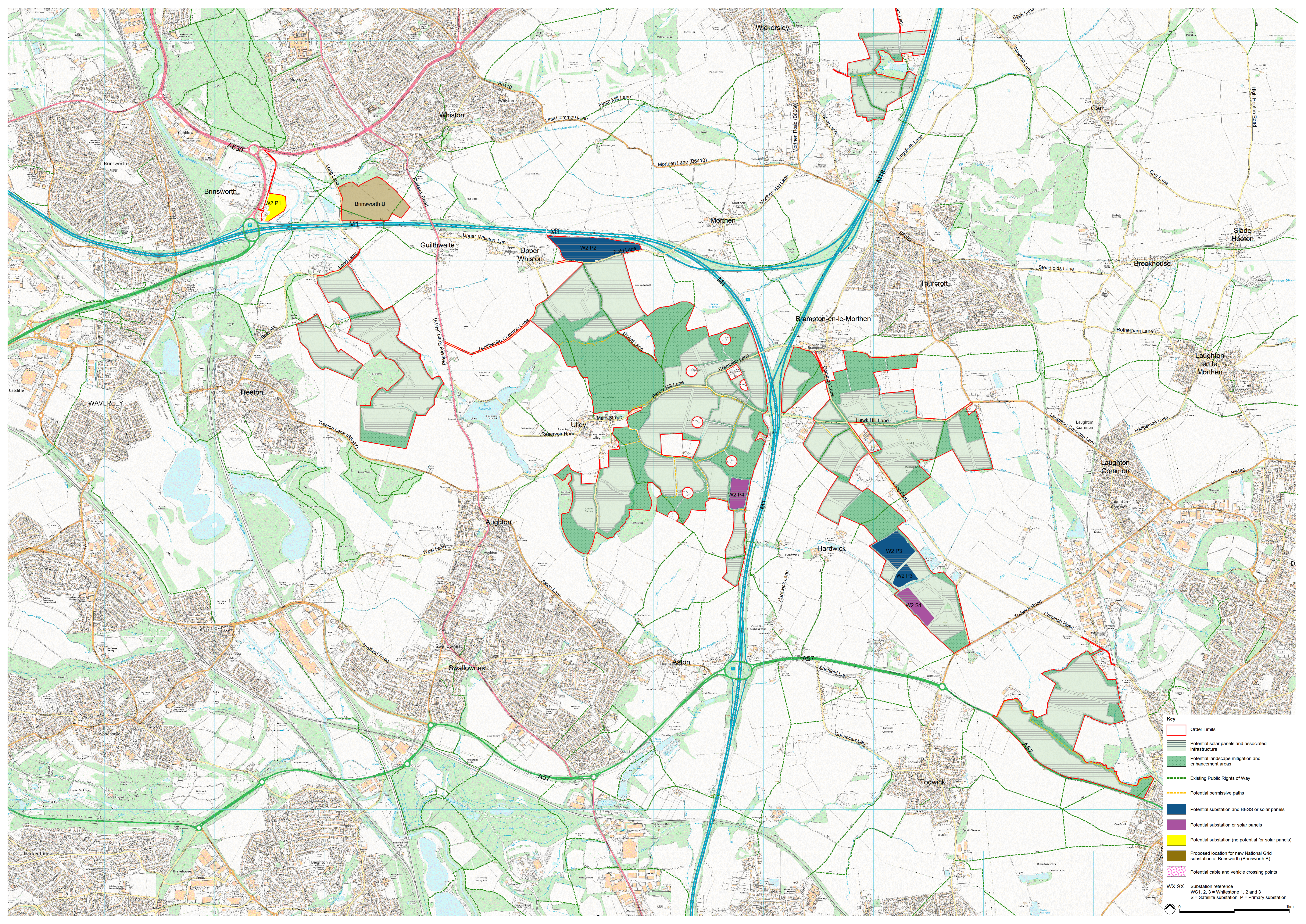
Stage 3 Design

- 4.2.5 Stage 3 Design is presented in the Indicative Operation Masterplan that was presented as part of the Draft ES, and for Statutory Consultation which ran from 16 September to 28 October 2025. The Stage 3 Design is shown in the Indicative Operation Masterplan on the next 3 pages.



- Key**
- Order Limits
 - Potential solar panels and associated infrastructure
 - Potential landscape mitigation and enhancement areas
 - Existing Public Rights of Way
 - Potential permissive paths
 - Potential substation and BESS or solar panels
 - Potential substation or solar panels
 - Potential substation - no potential for solar panels
 - Proposed location for new National Grid substation at Brinsworth (Brinsworth B)
 - Potential cable and vehicle crossing points
- WX SX Substation reference
 WS1, 2, 3 = Whitestone 1, 2 and 3
 S = Satellite substation. P = Primary substation.



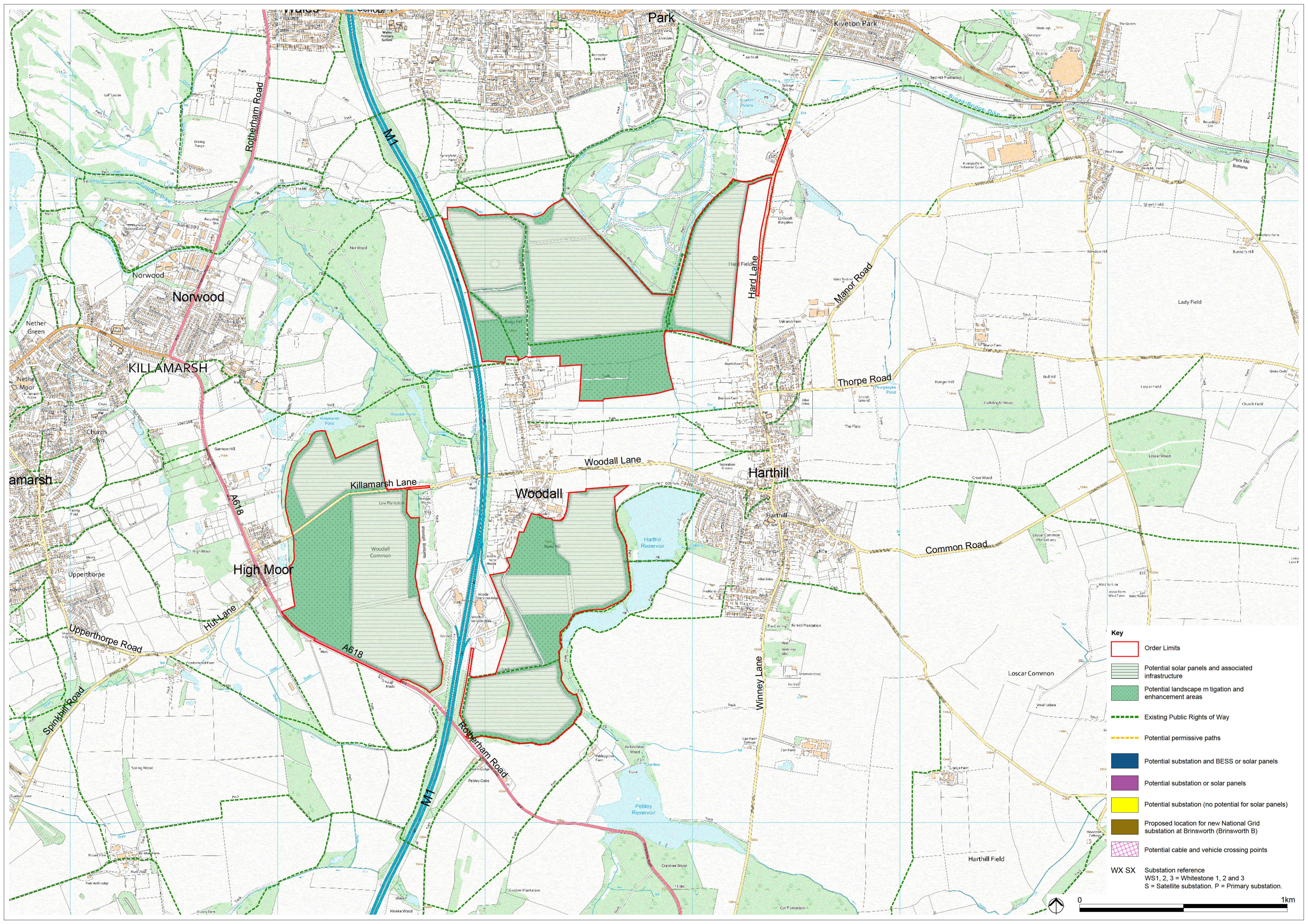


Key

- Order Limits
- Potential solar panels and associated infrastructure
- Potential landscape mitigation and enhancement areas
- Existing Public Rights of Way
- Potential permissible paths
- Potential substation and BESS or solar panels
- Potential substation or solar panels
- Potential substation (no potential for solar panels)
- Proposed location for new National Grid substation at Brinsworth (Brinsworth B)
- Potential cable and vehicle crossing points

WX SX Substation reference
 WS1, 2, 3 = Whitestone 1, 2 and 3
 S = Satellite substation, P = Primary substation.

0 1km



- Key**
- Order Limits
 - Potential solar panels and associated infrastructure
 - Potential landscape mitigation and enhancement areas
 - Existing Public Rights of Way
 - Potential permissive paths
 - Potential substation and BESS or solar panels
 - Potential substation or solar panels
 - Potential substation (no potential for solar panels)
 - Proposed location for new National Grid substation at Brinsworth (Brinsworth B)
 - Potential cable and vehicle crossing points
- WX SX** Substation reference
 WS1, 2, 3 = Whitestone 1, 2 and 3
 S = Satellite substation, P = Primary substation.





WHITESTONE
solar farm

Contact

Whitestone Net Zero Ltd

info@whitestonesolarfarm.co.uk

0800 688 9936